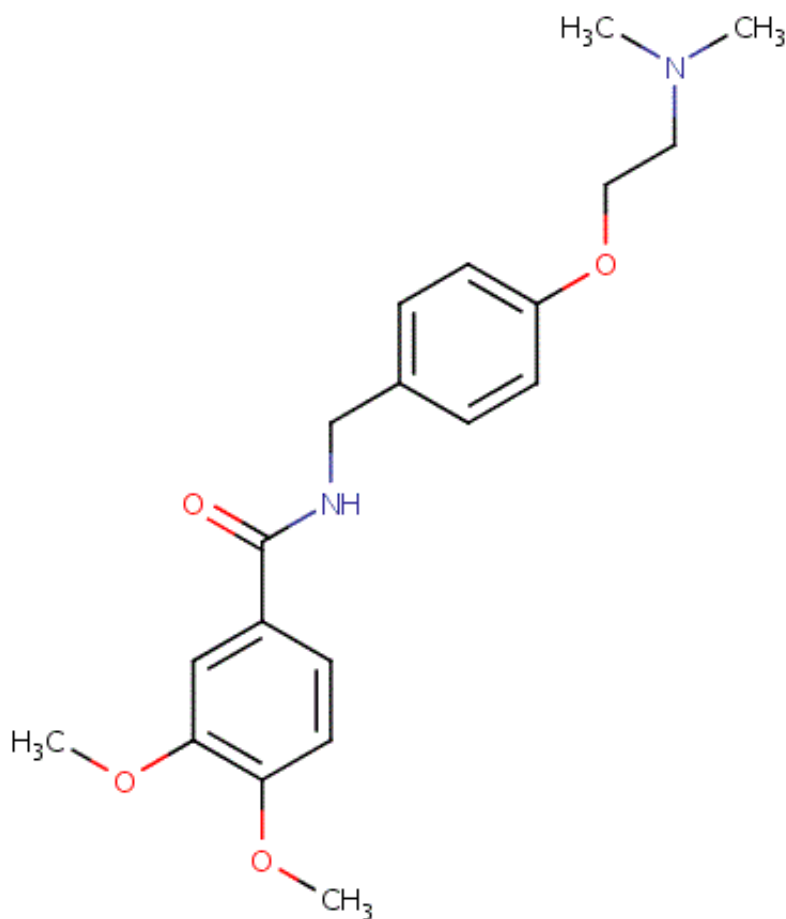


Records found: 1

Compound: Itopride



CAS:	122898-67-3						
Category:	Central Nervous System Agents						
Subcategory:	Antiemetics						
Formula:	C ₂₀ H ₂₆ N ₂ O ₄						
Molecular Weight:	358.43						
SMILES:	COC1=C(OC)C=C(C=C1)C(=O)NCC1=CC=C(OCCN(C)C)C=C1>						
Low est Solubility (mg/ml):	N/A						
Human Permeability (x 10 ⁴ cm/s):	N/A						
cLogP (BioLoom 5.0):	5.09	HIGH Permeability					
logP:	N/A	N/A					
Country List:	Minimum Dose (mg)	Maximum Dose (mg)	Do (min)**	Do (max)**	Solubility	BCS Class (cLogP)	BCS Class (logP)
KOR	50.0	50.0	N/A	N/A	N/A	N/A	N/A

** A volume of 250 mL is used for the drugs on the US, UK, SP, KOR, and WHO lists, and a volume of 150 mL is used for drugs on the JP list.