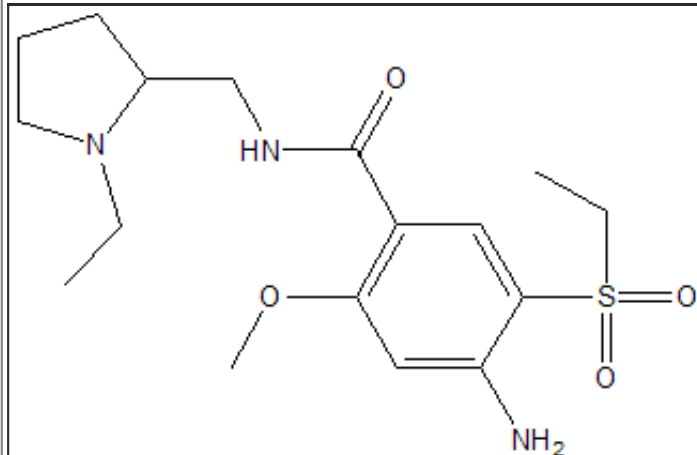


## Records found: 1

Compound: Amisulpride



CAS:	71675-85-9						
Category:	Central Nervous System Agents						
Subcategory:	Antipsychotics						
Formula:	C17 H27 N3 O4 S						
Molecular Weight:	369.48						
SMILES:	CCN1CCCC1CNC(=O)C1=CC(=C(N)C=C1OC)S(=O)(=O)CC						
pKa:	9.37						
Low est Solubility (mg/ml):	N/A						
Human Permeability (x 10 <sup>4</sup> cm/s):	N/A						
cLogP (BioLoom 5.0):	1.97	HIGH Permeability					
logP:	1.06	LOW Permeability					
Country List:	Minimum Dose (mg)	Maximum Dose (mg)	Do (min)**	Do (max)**	Solubility	BCS Class (cLogP)	BCS Class (logP)
SP	100.0	400.0	N/A	N/A	N/A	N/A	N/A
UK	50.0	400.0	N/A	N/A	N/A	N/A	N/A

\*\* A volume of 250 mL is used for the drugs on the US, UK, SP, KOR, and WHO lists, and a volume of 150 mL is used for drugs on the JP list.