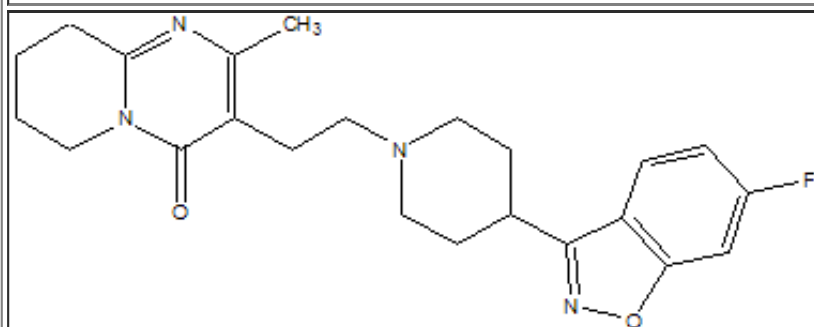


**Records found: 1**
**Compound: Risperidone**


CAS:	106266-06-2						
Category:	Central Nervous System Agents						
Subcategory:	Antipsychotics						
Formula:	C23 H27 F N4 O2						
Molecular Weight:	410.48						
SMILES:	CC1=C(CCN2CCC(CC2)C2=NOC3=C2C=CC(F)=C3)C(=O)N2CCCCC2=N1>						
pKa:	3.1						
Low est Solubility (mg/ml):	0.01						
Human Permeability (x 10 <sup>4</sup> cm/s):	N/A						
cLogP (BioLoom 5.0):	2.71	HIGH Permeability					
logP:	2.5	HIGH Permeability					
Country List:	Minimum Dose (mg)	Maximum Dose (mg)	Do (min)**	Do (max)**	Solubility	BCS Class (cLogP)	BCS Class (logP)
KOR	0.5	3.0	0.2	1.2	LOW*	Class II*	Class II*
JP	1.0	3.0	0.6666667	2.0	LOW*	Class II*	Class II*
SP	1.0	6.0	0.4	2.4	LOW*	Class II*	Class II*
UK	0.5	6.0	0.2	2.4	LOW*	Class II*	Class II*
US	0.25	4.0	0.1	1.6	LOW*	Class II*	Class II*

\* At the lowest dose strength, this is a HIGH solubility compound.

\*\* A volume of 250 mL is used for the drugs on the US, UK, SP, KOR, and WHO lists, and a volume of 150 mL is used for drugs on the JP list.