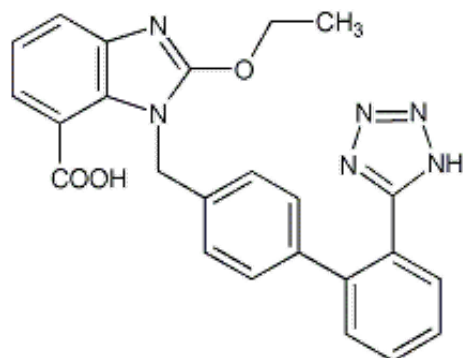


Records found: 1

Compound: Candesartan cilexetil



CAS:	145040-37-5						
Category:	Cardiovascular Agents						
Subcategory:	Angiotensin II Receptor Antagonists						
Formula:	C24 H20 N6 O3						
Molecular Weight:	440.454						
SMILES:	CCOC1=NC2=CC=CC(C(O)=O)=C2N1CC1=CC=C(C=C1)C1=CC=CC=C1C1=NNN=N1>						
Low est Solubility (mg/ml):	0.01						
Human Permeability (x 10 ⁴ cm/s):	N/A						
cLogP (BioLoom 5.0):	7.08	HIGH Permeability					
logP:	6.1	HIGH Permeability					
Country List:	Minimum Dose (mg)	Maximum Dose (mg)	Do (min)**	Do (max)**	Solubility	BCS Class (cLogP)	BCS Class (logP)
KOR	8.0	16.0	3.2	6.4	LOW	Class II	Class II
JP	2.0	12.0	1.3333334	8.0	LOW	Class II	Class II
SP	4.0	16.0	1.6	6.4	LOW	Class II	Class II
UK	2.0	16.0	0.8	6.4	LOW*	Class II*	Class II*

* At the lowest dose strength, this is a HIGH solubility compound.

** A volume of 250 mL is used for the drugs on the US, UK, SP, KOR, and WHO lists, and a volume of 150 mL is used for drugs on the JP list.