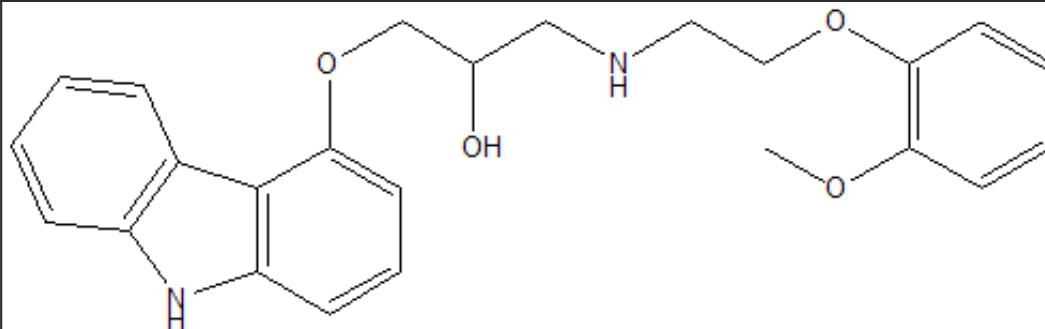


## Records found: 1

Compound: Carvedilol



CAS:	72956-09-3						
Category:	Cardiovascular Agents						
Subcategory:	Antiadrenergics (other)						
Formula:	C24 H26 N2 O4						
Molecular Weight:	406.474						
SMILES:	COC1=CC=CC(OC)=C1OCCNCC(O)COC1=CC=CC=C1N2>						
pKa:	7.8						
Low est Solubility (mg/ml):	0.01						
Human Permeability (x 10 <sup>4</sup> cm/s):	N/A						
cLogP (BioLoom 5.0):	4.04	HIGH Permeability					
logP:	4.19	HIGH Permeability					
Country List:	Minimum Dose (mg)	Maximum Dose (mg)	Do (min)**	Do (max)**	Solubility	BCS Class (cLogP)	BCS Class (logP)
KOR	6.25	25.0	2.5	10.0	LOW	Class II	Class II
JP	1.25	20.0	0.8333334	13.333334	LOW*	Class II*	Class II*
SP	6.25	25.0	2.5	10.0	LOW	Class II	Class II
US	3.125	25.0	1.25	10.0	LOW	Class II	Class II
UK	3.125	25.0	1.25	10.0	LOW	Class II	Class II

\* At the lowest dose strength, this is a HIGH solubility compound.

\*\* A volume of 250 mL is used for the drugs on the US, UK, SP, KOR, and WHO lists, and a volume of 150 mL is used for drugs on the JP list.